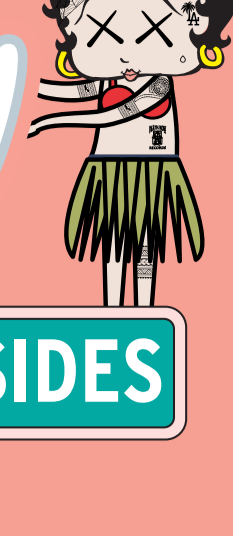


# Tiki Street

BY THE FARSIDES



## MENU

### THAI HAT YAI FRIED CHICKEN

WHOLE (10 PCS) 39 | HALF (5 PCS) 20

### SIGNATURE SAUCES 4oz

COCONUT FIRE 2\$  
SWEET THAI PINEAPPLE 2\$  
YUZU HONEY MUSTARD 2\$

### BANANA KETCHUP BBQ RIBS

FULL RACK (10 PCS) 29 | HALF RACK (5 PCS) 15

### GARLIC SHRIMP PAD THAI 25

3 tiger shrimp, rice noodles, ko kham omelette, coconut milk, tamarind, thai chili

### PAD THAI MEI WEI 15

Spicy fried tofu, rice noodles, coconut milk, tamarind, thai chili

### REMIXED FRIES | FAMILY 15 • RÉG 9

Loaded shoestring fries, hot mama spices, yuzu-honey avocado, sweet thai chili mayo

### BRAISED KALBI BANH MI 16

4 hour braised beef submarine, deep hoisin bbq sauce, kimchi gouda, pickled vegetables, in a toasted garlic butter jalepeno bun

### GOT BEEF BURGER 12

4oz angus beef patty, aged cheddar, pineapple pico, yuzu mayo, hot mama fries

### OG CHICKEN BAO BUN 13

Thai Hat Yai fried chicken, steamed bao, spicy coconut papaya dopeslaw

### RED CURRY MAC & CHEESE 15

3 cheese cream sauce, toasted coconut shavings, red curry madras, seashell pasta

### SAKÉ COD TEMPURA BURGER 14

Saké cod tempura, potato bun, cabbage, coconut tartar sauce, mama fries



## COMBOS

### FAMILY PACK 129.99\$

12 PCS HAT YAI THAI FRIED CHICKEN  
12 PCS BANANA KETCHUP RIBS  
FAMILY FORMAT REMIXED FRIES  
2 FIRE PAPAYA DOPE SLAW  
6 MALASADAS  
3 SIGNATURE SAUCES

### THE BIG DADDY 79.99\$

8 PCS HAT YAI THAI FRIED CHICKEN  
8 PCS BANANA KETCHUP RIBS  
FAMILY FORMAT REMIXED FRIES  
1 FIRE PAPAYA DOPE SLAW  
4 MALASADAS  
3 SIGNATURE SAUCES

### LIL HOMIE 49.99

5 PCS HAT YAI THAI FRIED CHICKEN  
5 PCS BANANA KETCHUP RIBS  
REMIXED FRIES  
1 FIRE PAPAYA DOPE SLAW  
1 MALASADA  
2 SIGNATURE SAUCES

### THE BIG KAHUNA 29.99

3 PCS HAT YAI THAI FRIED CHICKEN  
2 PCS BANANA KETCHUP RIBS  
HOT MAMA FRIES  
1 FIRE PAPAYA DOPE SLAW  
1 MALASADA  
1 SIGNATURE SAUCE

### LOVE IN A BOX 12.99

2 PCS HAT YAI THAI FRIED CHICKEN  
HOT MAMA FRIES  
1 FIRE PAPAYA DOPE SLAW  
1 SIGNATURE SAUCE

## EXTRAS

FRIES 4\$  
SPICY DOPE SLAW 4\$  
COCONUT FIRE 2\$  
SWEET THAI PINEAPPLE 2\$  
YUZU HONEY MUSTARD 2\$



## DESSERT

### GUAVA MALASADA 3.75

Sugar coated Hawaiian style doughnut

### 1/2 DOZEN GUAVA MALASADA 19

Sugar coated Hawaiian style doughnuts

## DRINKS

PEPSI / DIET PEPSI / 7UP 355ml 2.50\$

CHAMPAGNE KOLA ISLAND SODA 355ml 3.50\$

PINEAPPLE ISLAND SODA 355ml 3.50\$

TING SPARKLING GRAPEFRUIT SODA 355ml 3.50\$

STEWART'S CLASSIC BLACK CHERRY SODA 355ml 4.00\$

LIPTON MANGO PASSIONFRUIT ICED TEA 355ml 3.00\$

\*\*SPECIAL IMPORT\*\* WHITE PEACH FANTA 355ml 6.00\$

\*\*SPECIAL IMPORT \*\* WHITE GRAPEFRUIT MOJITO 7UP 355ml 6.00\$

FIJI 330ml 2.50\$

## WHITE WINE

HAY MAKER, MARLBOROUGH, NEW ZEALAND 27\$

ZONIN LUGANA 28\$

CHARDONNAY OUTLOT, SONOMA COUNTY, ALEXANDER VALLEY 39\$

## RED WINE

8 BAGOS TINTO, PORTUGAL, DOURO 29\$

BORDÓN, ESPAGNE, LA RIOJA 29\$

LA FOCAIE, ITALIE, MAREMMA TOSCANE 22\$

## ROSÉ

WHISPERING ANGEL AOC COTEAUX D'AIX-EN-PROVENCE 39\$

## PROSECCO

ZONIN PROSECCO CUVÉE 1821, ITALIE, VENETO | 12 BTG 22\$

## CHAMPAGNE

MOËT & CHANDON BRUT IMPERIAL CHAMPAGNE 200ML 50\$